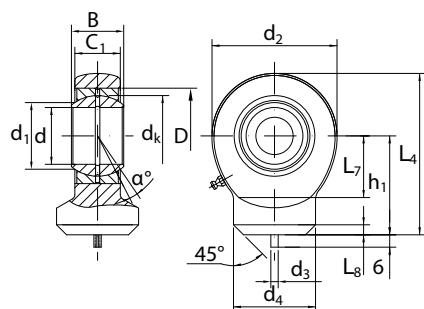


# GK..DO



GK..DO - Weldable rod end requiring maintenance with dowel pin, grease nipple and grease groove

Weldable rod end made of a zinc plated steel housing with a GE..ES or GE..ES 2RS spherical plain bearing mounted

\* without grease nipple

\*\* without grease hole and grease nipple

Also available with seals, e.g. GK 30 DO 2RS

Designation	Dimensions mm														Load ratings kN	
	d	d <sub>3</sub>	d <sub>4</sub>	B	C <sub>1</sub>	d <sub>2</sub>	L <sub>7</sub>	L <sub>8</sub>	h <sub>1</sub>	L <sub>4</sub>	d <sub>k</sub>	d <sub>1</sub>	D	a <sub>z</sub>	dyn. C	stat. C <sub>0</sub>
GK 10 DO**	10	3	15	9	7	29	15	1.5	24	38.5	16	13.2	19	12	8.15	15.6
GK 12 DO**	12	3	17.5	10	8	34	18	1.5	27	44	18	15.0	22	11	10.8	21.6
GK 15 DO*	15	4	21	12	10	40	20	2.0	31	51	22	18.4	26	8	17.0	32.0
GK 17 DO*	17	4	24	14	11	46	23	2.0	35	58	25	20.7	30	10	21.2	40.0
GK 20 DO*	20	4	27.5	16	13	53	27.5	2.0	38	64.5	29	24.2	35	9	30.0	54.0
GK 25 DO	25	4	33.5	20	17	64	33	3.0	45	77	35.5	29.3	42	7	48.0	72.0
GK 30 DO	30	4	40	22	19	73	37.5	3.0	51	87.5	40.7	34.2	47	6	62.0	95.0
GK 35 DO	35	4	47	25	21	82	43	3.0	61	102	47	39.8	55	6	80.0	125
GK 40 DO	40	4	52	28	23	92	48	4.0	69	115	53	45.0	62	7	100	156
GK 45 DO	45	6	58	32	27	102	52	4.0	77	128	60	50.8	68	7	127	208
GK 50 DO	50	6	62	35	30	112	59	4.0	88	144	66	55.9	75	6	156	250
GK 60 DO	60	6	70	44	38	135	72.5	4.0	100	167.5	80	66.8	90	6	245	390
GK 70 DO	70	6	80	49	42	160	86	5.0	115	195	92	77.9	105	6	315	510
GK 80 DO	80	6	95	55	47	180	98	5.0	141	231	105	89.4	120	6	400	620